

Be the Highest of Standards

**MeSYS**®

**TRIPLE OFFSET**

**TRIPLE OFFSET BUTTERFLY VALVE**

**MeSYS**®

*Mechanical and Fluid Control Systems*

[www.j-mcsys.com](http://www.j-mcsys.com)



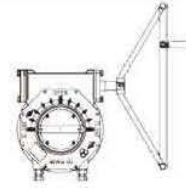
# TRIPLE OFFSET BUTTERFLY VALVE SPECIFICATION

## LAMINATED SEAT TYPE SPECIFICATION

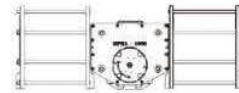
### 950 Series



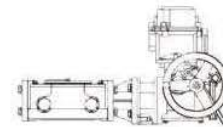
#### OPERATING METHOD



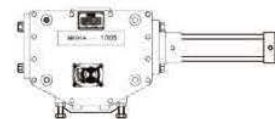
MANUAL



PNEUMATIC



ELECTRIC



HYDRAULIC

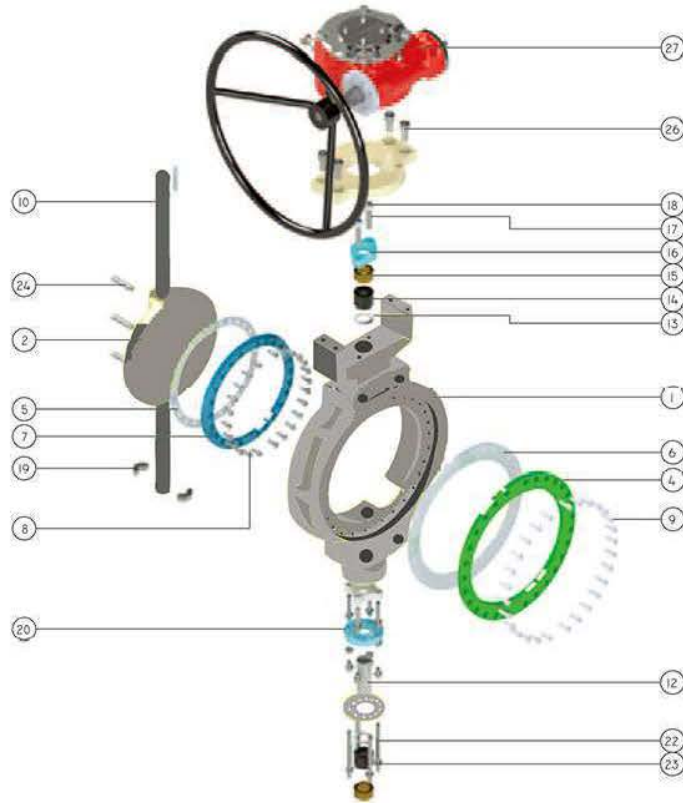
#### DESCRIPTION

SIZE RANGE:	2"-120"
TEMP. RANGE:	-50 ~ 650°C
DESIGN:	API 609 / BS 5155 / ANSI B 16.34
TEST INSPECTION:	API 598 / ISO 5208
PRESSURE TEMP' RATINGS:	ASME / ANSI B 16.34 ,16.24
LEAKAGE:	ZERO LEAKAGE
FLUID:	WATER/SEA WATER/O2/CO2/H2/ COG/LDG/BFG/FOG/MIXED GAS/ DUST/STEAM/AIR/ HYDROCHLORIC ACID/SULFURIC ACID NITRIC ACID
FLANGE RATING:	ASME B 16.5/16.47 CLASS 150LB, 300LB,600LB KS(JIS) 10K, 16K, 20K, 30K, 40K BS 4504 DIN PN 10,PN 16,PN 25,PN 40 AWWA C207 CLASS B & D ,E,F



# TRIPLE OFFSET BUTTERFLY VALVE EXPLODED VIEW

## LIMINATED SEAT



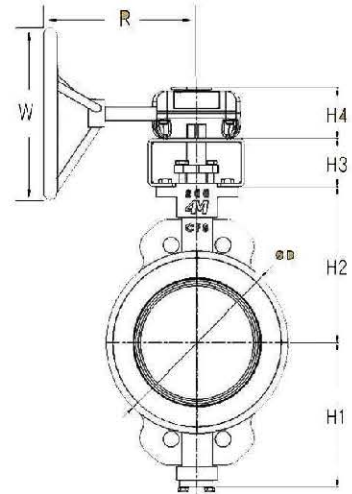
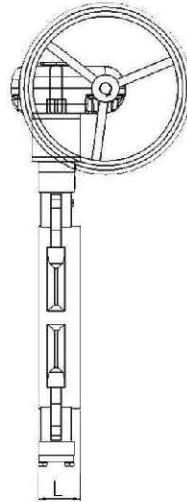
NO	PART NAME	NO	PART NAME	NO	PART NAME
1	BODY	10	SHAFT	19	SEGMENT RING
2	DISC	11	MAIN BUSH	20	RING HOLDER (TOP)
3	BODY SEAT	12	STUB BUSH	21	RING HOLDER(BOTTOM)
4	DISC SEAT	13	PACKING RING	22	ADJUSTABLE BOLT
5	BODY SEAT GASKET	14	PACKING	23	ADJUSTABLE NUT
6	DISC SEAT GASKET	15	GLAND RING	24	SHAFT PIN
7	INSERT RING	16	GLAND FLANGE	25	TOP FLANGE
8	INSERT RING BOLT	17	GLAND BOLT	26	TOP FLANGE BOLT
9	DISC SEAT BOLT	18	HEX. NUT	27	GEAR BOX

LIMINATED SEAT



# SOLID SEAT TYPE

# 951 Series



## Valve Seating Torques (in-lbs)

SIZE		중량	DIMENSION (mm)							
Inch	mm		L	ØD	H1	H2	H3	H4	R	ØW
10	250	43	70	325	238	257	70	70	220	250
12	300	83	78	370	255	285	76	90	320	300
14	350	91	81	415	275	300				
16	400	118	102	475	355	375				
18	450	147	115	534	380	408				
20	500	171	120	593	410	441	115	95	420	400
22	550	190	154	642	435	475				
24	600	208	154	675	460	490				

SIZE		중량	DIMENSION (mm)							
Inch	mm		L	ØD	H1	H2	H3	H4	R	ØW
2	50	4.5	43	96	77	100	65	50	160	120
2.5	65	5.2	46	116	90	110				
3	80	6.5	46	126	95	120				
4	100	7.5	52	150	110	140				
5	125	14	57	180	145	170	70	70	200	200
6	150	18	62	212	150	175				
8	200	29	61	264	210	225				

## Ordering Guideline

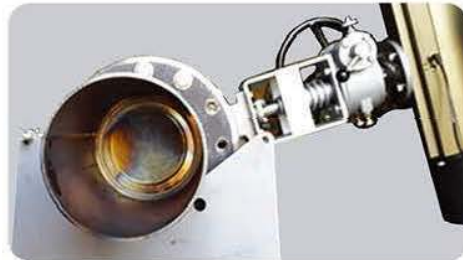
Size	Series	Class	Body	Disc	Shaft	Packing	Seat Ring	Operator	Mode	Fail Action
X	XXX	XXX	XX	XX	XX	X	XXX	XX	XX	XX
↓	↓	↓	↓	↓	↓	↓	↓	↓	↓	↓
3"	950-Water	150	CS-Carbon steel	D1-Carbon steel	S1-410 SS	G-Graphite	LR1-Laminated 304 SS/Graphite	LV-Lever	DA-Double Acting	LP-Last Position
4"	951-Lug	300	S4-304 SS	D2-304 SS	S2-316 SS	T-PTFE	LR2-laminated 316 SS/Graphite	GO-Grar Operator	SR-Spring Acting	FC-Fail Closed FO-Fail Open
5"										
6"										
8"	952-Double Flange	600	S6-316 SS	D3-316 SS	S3-304 SS	R-RTFE	SR1-Solid 304 SS	PN-Pneumatic Actuator	EL-Electric Actuator	HY-Hydraulic Actuator
10"										
12"										
14"										
16"										
18"										
20"										
24"										
			BX-Special Alloy	DX-Special Alloy	S4-630 SS (17-4PH) S5-402 SS SX-Special Alloy	N-Nitronic	SR2-Solid 316 SS SRX-Special Alloy			

Technical Data

SOLID SEAT TYPE SPECIFICATION



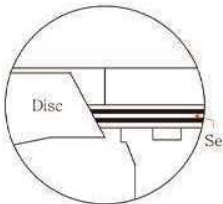
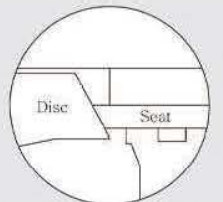
High temperature test  
Seat structure



Operation test after high temperature heating



High temperature test  
Triple offset seat structure Valve opening shape

Type	Seat Structure	Material	Temp erature Range	Characteristic
Laminate Seat		316L	-20℃~400℃	금속재질과 그래파이트가 적층구조로 되어 있음.
Solid Metal Seat		316L InconeI 625	-20℃~650℃	금속재질의 단일재질로 되어 있음. 고온 고압유속에 안정적임.

It is made of a single material of metal  
Laminated structure of Metal & Graphite

***MCSYS***<sup>®</sup>

Mcsys,Inc. • 2211 Jungwang-Dong,Siheung-Si,Kyunggi-Do,Korea  
• Tel:+82-31-319-6560 • Fax:+82-31-8041-9774  
• enquiry@j-mcsys.com • www.j-mcsys.com